

System Configurator

What is your operating temperature?*

<input type="text"/>	<input type="text"/>	F°
Min	Max	C°

What is your operating pressure?

What is your deposition process? (select one)

Metallization

Optical

Other (please specify)

What is your process type? (select one)

ALD

CVD

PVD Evaporation

PVD e-beam

Other (please specify)

I am using my own sensor*

*Colnatec systems operate in the 6 Mhz to 5 Mhz frequency range. A sensor operating outside of this range is incompatible with Colnatec controllers and monitors. For best performance, use Colnatec sensor heads with Colnatec monitors and controllers only. Colnatec cannot guarantee compatibility of Colnatec products with non-Colnatec products.

Colnatec sensors are rated to $\leq 500^{\circ}\text{C}$.

Configure a sensor head

A. Select flange type (select one)

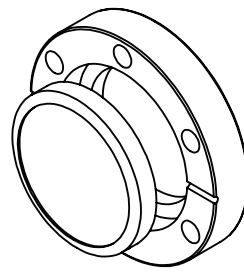
CF275 - fixed (custom)

CF275R - rotatable (standard)

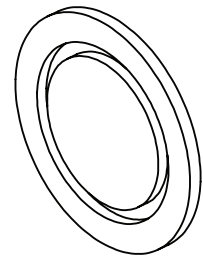
KF40

KF50

Other (briefly describe)



CF Style Flange
Rotatable Center



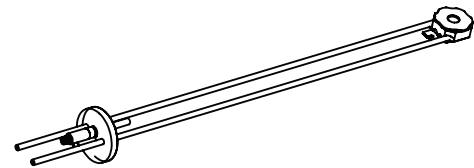
KF Style Flange

B. Select sensor head orientation (orientation based on flange) (select one)

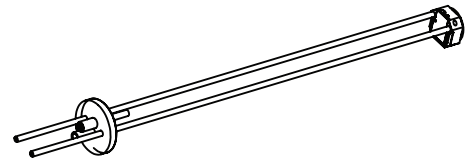
Parallel

Perpendicular

Custom (briefly describe)



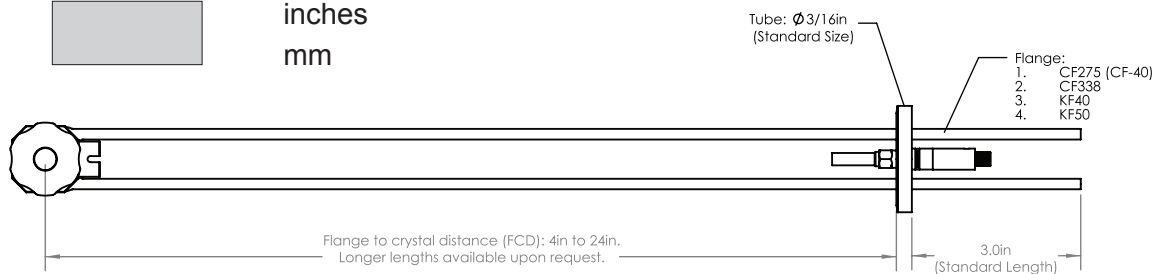
Perpendicular



Parallel
Sensor head parallel
to flange.

C. Enter sensor head length (distance from the center of the crystal to flange)

inches
mm



Continue

Do you need source control?

Select a controller

Eon-ID



- Integrated display to fit greater variety of settings and applications
- Connectivity includes ethernet, usb, and WiFi.
- New, easy-to-use interface
- Rackmount capable (standard 19" 5U high rack, two Eon-IDs per rack slot)
- Dual channels for expanded capability
- Advanced technology that increases reliability and durability in industrial environments
- Temperature monitoring system that reads crystal to within +/- 1°C accuracy

Continue

Select a monitor

Eon-LT Monitor



- Temperature measurement/control crystal measurement
- Shutter on/off support (relays)
- Heater status indicator on unit and in software
- Communicates with fully customizable software
- Widely expandable systems - up to 255 Eon-LT™ Monitors can be networked
- Temperature monitoring system that reads temperatures to within +/- 1°C

Eon-ID



- Integrated display to fit greater variety of settings and applications
- Connectivity includes ethernet, usb, and WiFi.
- New, easy-to-use interface
- Rackmount capable (standard 19" 5U high rack, two Eon-IDs per rack slot)
- Dual channels for expanded capability
- Advanced technology that increases reliability and durability in industrial environments
- Temperature monitoring system that reads crystal to within +/- 1°C accuracy

Continue >

Accessories

Universal Oscillator*

\$199.95



*Eon-LT will require external oscillator if distance between crystal compartment and Eon-LT exceeds 36".

Continue >

Contact Info

Designation

*

First Name

*

Last Name

*

Company/Institution

*

Email Address

*

Phone

* Required information

Submit